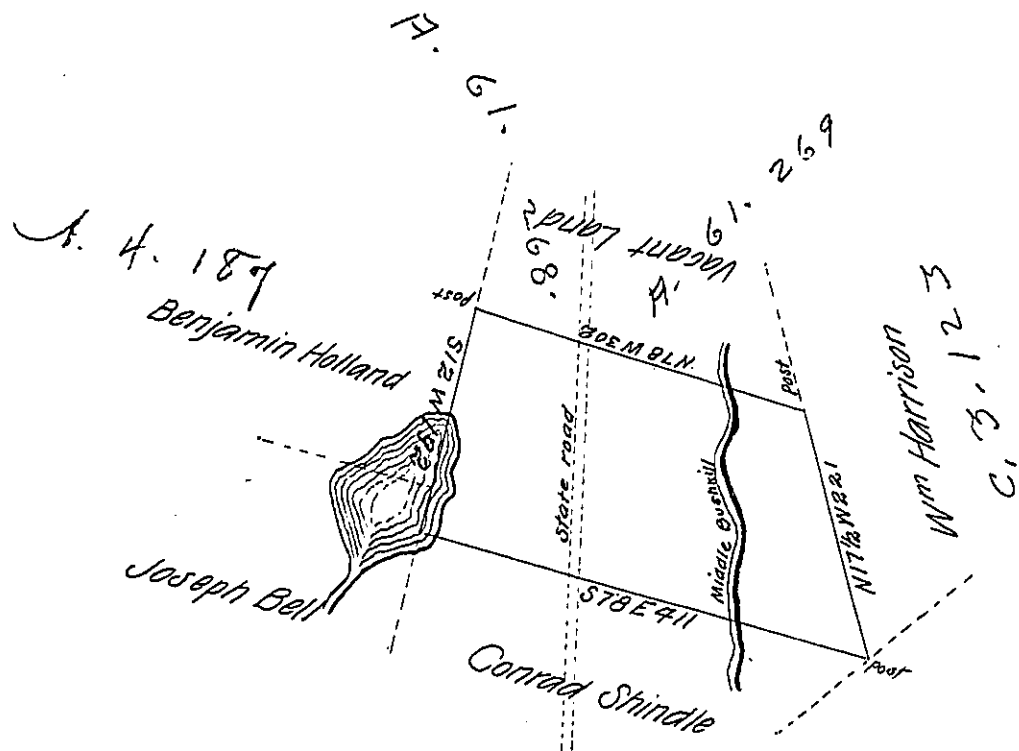


Lehman —  
PIKE

✓



18

By Virtue of a Warrant dated the 29<sup>th</sup> day of January 1793 and  
 order of Survey rec<sup>d</sup> the 1st of March 1847 Surveyed the 15<sup>th</sup> of October 1847  
 to George Eggert the above described tract of land Situate in Lehman Township  
 (formerly Northampton) now Pike County adjoining land granted to Conrad Shindle  
 Containing four hundred and three acres one hundred and forty nine perches and allowance  
 of Six per cent for roads &c

To John Laporte Esq }  
 Surveyor General of Penn<sup>a</sup> }

p<sup>r</sup> John T Cross D.C.

IN TESTIMONY that the above is a copy of the original remaining on file in  
 the Department of Internal Affairs of Pennsylvania, made  
 conformably to an Act of Assembly approved the 16th day of  
 February, 1833, I have hereunto set my Hand and caused  
 the Seal of said Department to be affixed at Harrisburg,  
 this twenty ninth day of September 1904

*George R. Brown*  
 Secretary of Internal Affairs.